

# DEVI & PII

MANUAL



SEGA®

Thank you for purchasing the SEGA Mega Drive/Genesis cartridge, Devi & Pii. Be sure to read this manual fully before you play, because you'll enjoy the game a lot more that way!



## Contents

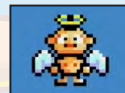
|   |    |
|---|----|
| A Polite Request from the Goddess ..... | 3  |
| Controls .....                          | 4  |
| Starting the Game .....                 | 5  |
| Playing the Game                        |    |
| Devi & Pii Basics .....                 | 6  |
| Game Screen .....                       | 7  |
| Characters.....                         | 8  |
| Boss .....                              | 8  |
| Area Select .....                       | 8  |
| Bonus and Perfect Clear .....           | 9  |
| Game Over and Continue .....            | 9  |
| Items .....                             | 10 |

# A Polite Request from the Goddess

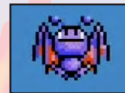


Taro, Hanako, welcome to Heaven! I'm the Goddess around here, the one that summoned you both.

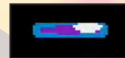
Listen guys... I really need your help! I need you to bring back the "Pii," angels who never returned from their trip to other worlds. So, you want to know why I need you two specifically? Well, it all began...



What? You'll do that for me without further question? Hey, that works too! You know, you should probably be aware that the other worlds are also occupied by little devils called "Devi" that will hinder your every move, but don't let that get you down! Take care of yourselves, and thank you!

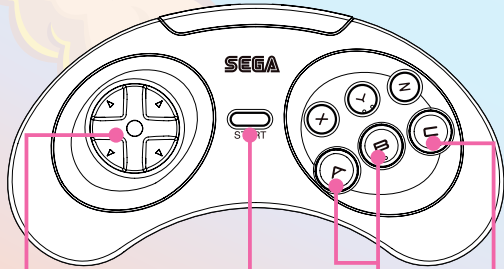


In case I forgot to mention, I changed your appearance to that of a paddle, to make it easier to catch the Pii. It'll make sense when you see it...



Well, off you toddle then!

## Controls



### START Button

- Pause\*1
- Game Start

### Button C

- Confirm

### Button A / B

- Move upper paddle
- Confirm

### D-Pad

- Move lower paddle
- Select direction of recovery request (attack request) field
- Mode Select at game start
- Area select at Round Clear

\*1 Press Button C while paused to force a Stage clear.

\*2 Buttons X, Y and Z are not used.

## Starting the Game

Press the START Button at the title screen to open the Mode Select screen. Choose the mode you wish to play.



### 1人で 1 Player



One player attempts all 7 Rounds, with 5 Stages each, alone. Good luck!

### 2人で対戦 2 Player Competitive

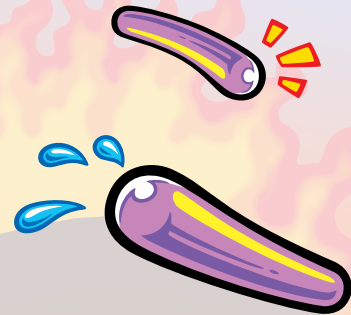


Two players compete in a split screen mode.

### 2人で協力 2 Player Cooperative



Two players join forces to tackle each Stage.

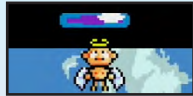


# Playing the Game

## Devi & Pii Basics

Capture the required number of Pii, or defeat the boss to clear each Stage.

Use Buttons A / B to move the upper paddle and try to catch the rising Pii. Fail to capture them and the field will shrink from the top.



Use the D-Pad to move the lower paddle. If Devi or enemy attacks hit the lower paddle, the field will shrink from the bottom. Keep well out of their way!



Hit a Devi with the side of the lower paddle to perform a "Devi Attack." The Devi will go spinning off and collide with other enemies.



If a Devi Attack collides with a Pii, an item will be released.



### Recovery Stock

Converted from regular Pii's



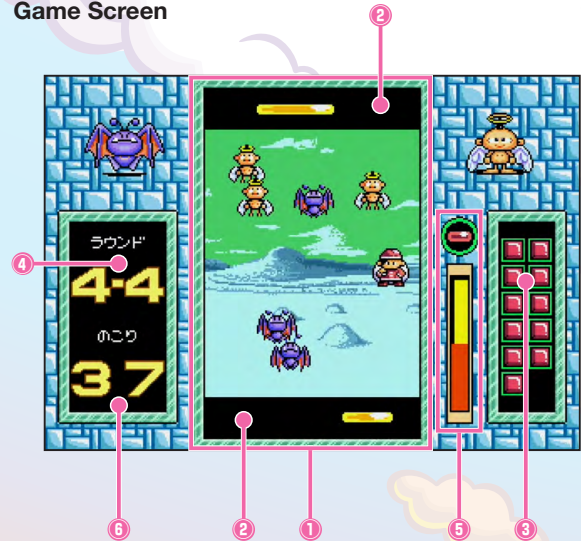
### Use Stock

Converted from red Pii's

Pick up a Use Stock Item while holding a Recovery Stock, and the up and down arrows will be displayed. Select one with the D-Pad to recover the respective field.



## Game Screen



### 1 Field

### 2 Paddle Area

### 3 Recovery Stock

### 4 Current Round

### 5 Next Item / Item Gauge

The gauge builds with successful consecutive Pii saves. When the gauge fills, the displayed Item will appear.

### 6 Outstanding Quota

Collect this number of Pii, or hit the Boss this number of times to clear the Stage.

## Characters

Occasionally special characters will appear in the field.



Such characters include...



### Sank

Drops an item if he hits a Devi.



### Goddess

Catch with the upper paddle to recover the entire field. If she strikes a Devi, though, she will become enraged and the field will shrink.

Not all characters are there to help you. Occasionally, you will see meddlesome characters that are unique to a given area.



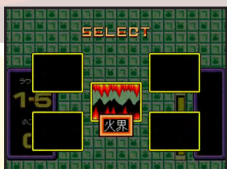
## Boss

A powerful boss is waiting for you in the last Stage of each Round. Fight back with Devi Attacks while avoiding attacks to win.



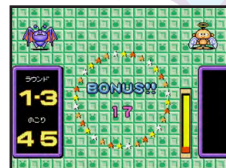
## Area Select

Defeat a Boss to proceed to the Area Select screen. Use the D-Pad to select the next area to play, and press Button A / B / C or the START Button to confirm.



## Bonus and Perfect Clear

Clear Stages 1 to 3 of each Round to receive a bonus relative to the size of the field. The bonus will be taken from the quota of the next Stage. If you clear a Stage at maximum field height, you will achieve a Perfect Clear.



## Game Over and Continue

If the field shrinks sufficiently for the two paddle areas to collide, or a paddle area reaches the red arrows, it's game over.



\* Please note that the Stage number displayed under BEST SCORE at game over is not always entirely precise.

At game over, if you have a Ring, you can use a Continue. Rings can be found in the field, or earned by attaining Perfect Clears for stages 1 through 3 of a given Round.



## Items



Stock Item for field recovery (p.6).



Swaps the upper and lower paddle.



Use the D-Pad ↑ / ↓ to decide which side of the field to recover when using Recovery Stock (p.6).



Earns you one continue.



Recovers a little bit of field.



Stops Devi from appearing for a short time.



Recovers the entire field.



Stops Pii from appearing for a short time.



Increases the paddle speed.



Stock for attacking your opponent's field.\*



Makes the paddle longer.



Use the D-Pad ↑ / ↓ to attack one side of your opponent's field with gathered stock.\*



Increases effectiveness of Devi attack.

\* Only appears in 2 Player Competitive mode.

## Precautions

Game cartridges are precision electronic equipment! Please take the following precautions when handling them.



### ● Cartridges are Delicate!

Do not subject your cartridges to strong shocks.

Striking or stepping on a cartridge will damage it!



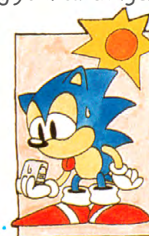
### ● Be sure the power is OFF!

Before removing a cartridge, make doubly sure that the console power is switched to OFF!



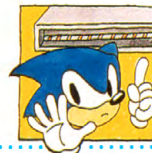
### ● Storing your Cartridges

When storing your cartridges, try to avoid places that are unusually hot, cold or humid.



### ● Don't Touch the Terminals!!

Do not touch the terminal contacts or allow them to get wet. Doing so will damage the cartridge!



### ● Precautions while Playing

Try to take a 10 to 20 minute break for each hour of gameplay. Sit as far back from the TV as the controller cables will allow.



### ● Avoid Chemical Cleaners!!

Do not use chemicals such as benzine or solvents when wiping off dirt.



Warning for owners of projection televisions: Still pictures or images may cause permanent picture-tube damage or mark the phosphor of the CRT. Avoid repeated or extended use of video games on large-screen projection televisions.

DEVI.DI



SEGA CORPORATION